

EVE.2.X

EMPURON VISUAL EFFICIENCY

EVE.2.X - Recording efficiency measured values and meters independently of manufacturers and supporting DIN EN ISO 50001

EVE.2.X is an IT system consisting of real-time integration components, database, server and reporting functions. Through the portal system call up evaluations online. This means that all energy information is available with a few clicks. Due to the built-in high-performance database, the data is stored safe. The core element is the automatic reporting in the case of an error. In addition to saving energy, this allows the availability of the technical process.

Superior analysis - developed with intelligence

EVE.2.X is a compact energy management system that supports working analogous to DIN EN ISO 50001. With its system function it combines interface diversity with analysis based on Artificial Intelligence and mathematical calculation analysis. The selection of use cases is based on self-learning modelling. Standard models and modelling interfaces allow a quick adaptation to the respective

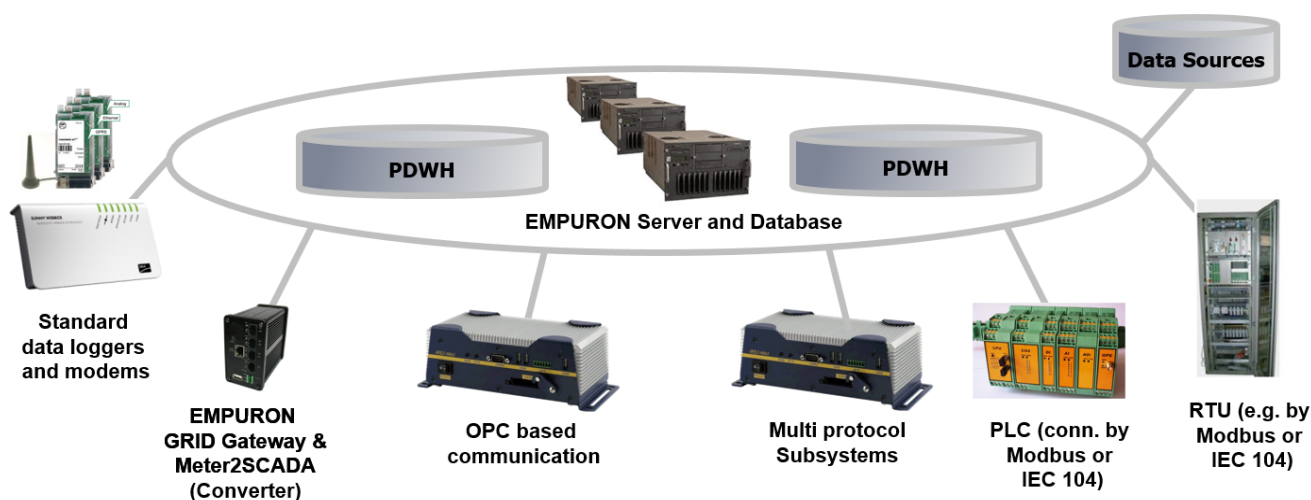
EVE.2.X

- Analyse according to DIN EN ISO 50001
- Analyse and forecast on application modelable
- Event analysis
- Alarm via E-Mail, SMS or voice call
- Predictive analysis with Artificial Intelligence

Interface structure of EVE.2.X - 100% manufacturer independence and completeness

Protocols: IEC 61850, 101, 102 103, 104, Modbus RTU/TCP, SPA, HART, Profibus, DNP3, NEO, FINS, DLMS, IEC 1107, KNX, OPC, Zigbee, Zwave, CAN, BACnet, SNMP

ETL Data Access: XML, CSV, XLS, FTP, LDAP, JSON, WSDL, MDM, HIVE, MS-SQL, Netezza, ORACLE, ParAccel, Teradata, Vertica





System design

EVE.2.X has an entry level system with data volume of 32 or 128 data points.

Converter and manufacturer adapter

The meters and measuring devices are connected via EMPURON- or manufacturer-components.

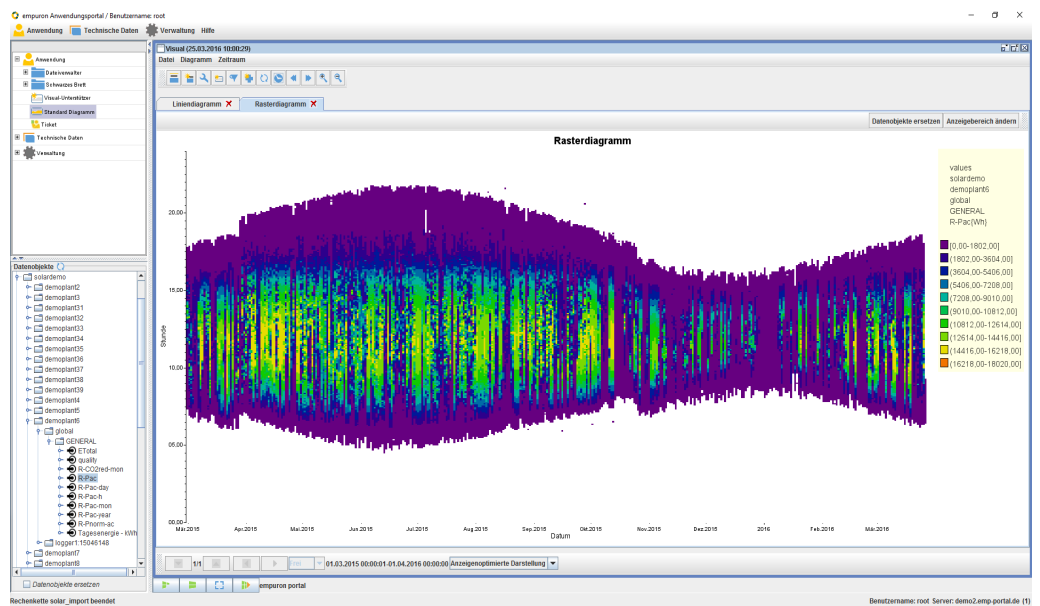
Examples:

- M-Bus Gateway
- Modbus TCP / RTU Converter
- Daten loggers for humidity and temperature sensors
- EMPURON Grid-Gateway
- Meter2SCADA
- Radio adapter

Features of EVE.2.X

- Complete integration infrastructure
- Alarm functions adjustable
- Artificial intelligence with artificial neural networks
- Diverse evaluation options
- Integrated portal
- Self diagnosis and system maintenance
- Interactive programming
- Meter accurate data acquisition
- Grouping of virtual counters

Example evaluation „Carpet Plot“



EVE.2.X System with EMPURON Grid Gateway

